

Ant Empowerment



by
Leslie Wilson

Hard work, strict discipline, team work, strength,
industriousness

Ant (general) -- Greater strength than can be imagined, the patience and endurance needed to complete a task, building your dreams slowly over time, community minded, mass consciousness, an affinity for magnetic fields. Being able to submerge yourself in a project and work without sleep. (Be careful not to misidentify a termite for an ant, which is a common mistake, especially with the flying varieties.)

Spirit Walk Ministry



Dreams of Ants

Because of the nature of ants and the widespread occurrence of fire ants, it is only natural that this little creature finds its way into our subconscious as the symbol of pettiness and annoyance. But on a positive note, they can symbolize diligence foresight and teamwork. The little ant is also indicative of organization, and business discipline. In dreams where the ant is related to work issues the ant symbolizes the work ethic or lack of. To be bitten by an ant in a dream can indicate a small annoyance in your life, or if bitten by many, lots of small annoyances in life.

Ant Totem

Ants are the ultimate laborers. They live in a communal colony, sharing menial tasks and food sources. Underneath the ant hill that we see on our lawns and gardens are elaborate living quarters. Ants as totems teach the value of work and getting along with your co-workers. They also teach the importance of community as a unit. Ants live within a caste system. A queen ant, mates for the queen, guards to protect the queen, and laborers. When ant appears you may need to evaluate the role you are playing in your current life situation. We can't all be queens. Laborers do have value! Team work offers rewards. However, if you feel you are enslaved by your job or circumstance ant totem showing up could mean that it is time to break away from current associations with others and take a solitary path for awhile. (about.com)



Ant Symbolism

Since ants live in colonies, they symbolize organization and planning in a group. Ants are also a symbol of strength and energy, and patience and perseverance.

As colonies, they symbolize diligence and industriousness. The multiplicity surrounding ants gives it unfavorable symbolism, sometimes compared with swarming humanity, and a sudden great increase in ants can spell war.



Ant Dream Symbols:

Carrying your own weight; strength; industrious. Also can symbolize annoyance, little things that bug you. Hard work, strict discipline, team work and conformity.

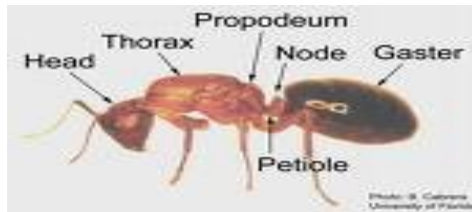
Ant Profile (Wikipedia)

Ants are common insects, but they have some unique capabilities. More than 10,000 known ant species occur around the world. They are especially prevalent in tropical forests, where they may comprise up to half of all the insects living in some locations.

Ants look much like termites, and the two are often confused—especially by nervous homeowners. However, ants have a narrow "waist" between the abdomen and thorax, which termites do not. Ants also have large heads, elbowed antennae, and powerful jaws. These insects belong to the order Hymenoptera, which includes wasps and bees.

Enthusiastically social insects, ants typically live in structured nest communities that may be located underground, in ground-level mounds, or in trees. Carpenter ants nest in wood and can be destructive to buildings. Some species, such as army ants, defy the norm and do not have permanent homes.

Ant communities are headed by a queen or queens, whose function in life is to lay thousands of eggs that will ensure the survival of the colony. Workers (the ants typically seen by humans) are wingless females that never reproduce, but instead forage for food, care for the queen's offspring, work on the nest, protect the community, and perform many other duties.



Male ants often have only one role—mating with the queen. After they have performed this function, they may die.

Ants communicate and cooperate by using chemicals that can alert others to danger or lead them to a promising food source. They typically eat nectar, seeds, fungus, or insects. However, some species have diets that are more unusual. Army ants may prey on reptiles, birds, or even small mammals. One Amazon species (*Allomerus decemarticulatus*) cooperatively builds extensive traps from plant fiber. These traps have many holes and, when an insect steps on one, hundreds of ants inside use the openings to seize it with their jaws.

Ants and humans

Ants perform many ecological roles that are beneficial to humans, including the suppression of pest populations and aeration of the soil.

In some parts of the world (primarily Africa and South America), large ants, especially army ants, are used as surgical sutures. The wound is pressed together and ants are applied along it. The ant seizes the edges of the wound in its mandibles and locks in place. The body is then cut off and the head and mandibles remain in place to close the wound.



Type: Bug

Diet: Omnivore

Average lifespan in the wild: Several weeks to several years

Size: 0.08 to 1 in (2 to 25 mm)

Group name: Army or colony

Did you know? Ants can lift and carry more than three times their own weight.

Size relative to a paper clip:

Attunement

There are no pre-requisites for this attunement. This is based on intent and may be sent as intent or chi ball. Always ask your higher source to be with you and always thank them for being there with you. Whatever procedures that you do for yourself to align with receiving attunements, please do them.

This empowerment and manual is free of charge and may be used by anyone.

The entire manual cannot be changed in any way.