



# The Planet Mercury

*Manual and channeling*

*By*

*Elizabeth (Midnightowl) Hibel (and Brenda (Silverwolf) Hanlon*

*Information from various sources*

*This manual is to be passed to Reiki Masters only.*

*When you are attuned to the energies of the planet Mercury you will receive the following attributes and energies.*

*Enjoy*





***Mercury**, the messenger of the Gods signifies the qualities of rapid change, transmutation, learning and growing.*

*By this virtue of his adaptable and changeable character he is capable of traveling in-between the worlds.*

*In mythology he is the messenger who relays messages from the realm of the Gods to the world of humans.*

*He can even enter into the Underworld and return unscathed in his role of the psychopomp who accompanies the souls of the dead on their last journey.*

*Furthermore, he is associated with commerce (exchange), travel, trickery and healing.*

*His metal is quicksilver/mercury the most liquid and changeable metal of all.*

*His stones are multicolored and patterned ones such as Agates.*

*In the realm of animals he rules swift and clever creatures.*

*Monkeys and Dogs have frequently been associated with Mercury, though he also rules those that are not bound by one particular environment, such as birds, who can fly as well as hop and often travel long distances.*

*In the realm of plants Mercury signifies the rapid growth process in the metamorphic development of young plants.*

*He rules fast growing or winding plants such as Morning Glory, as well as other climbers, creepers and vines.*

*The stems are rarely upright but rather flexible and bendy - they hardly ever become solidified in a woody form.*

*Flower coloration is non-specific and encompasses all shades of the rainbow-spectrum though the flowers tend to be rather small.*

*His signature is also present in feathery leaves and in seeds with wings.*

*The healing properties associated with mercurial plants are equally diverse and difficult to pin down.*

*They are often demulcent and have a somewhat slimy quality.*

*They may be purgative or alterative, aid digestion (especially in the passing of winds!), act as demulcents for the respiratory system or have a stimulating or balancing effect on the nervous system and the mind.*

*Mercurial Herbs include Lavender, Fennel, Speedwell, Valerian and Elecampane.*

*In human physiology Mercury rules the intellectual faculties of the mind, the nervous system, and the intestines.*

*In the Chinese system, the Kidneys are associated with the element Water and the planet Mercury.*





*Mercury is the fastest moving of the planets.*

*It shows how quickly we can change our thoughts, and how fast our thoughts travel.*

*In occult thought, Mercury represents both the messenger and the magician. It connects the mortal or ego self, the intuitive, or lower self, and the higher divine self.*

*As Mercury is associated with air, alexandrite is an air stone and so connected to the throat chakra.*

*But, because of its duality in color, it has also been associated with the heart, the solar plexus, and the crown chakra.*

*Mercury also represents the power of the mind, our ability to think, perceive, and communicate and it rules over the power of our words and how we use them. It is the planet most associated with the rational world. In magic, alexandrite can be used alongside other Mercury ruled objects to cast spells that enhance communication, mental clarity, memory, and perception. It can be used in meditation, to promote emotional balance, and to bring about change, happiness, and success. It is thought to be most powerful when the sun's rays are shining on it and is reportedly useful for astral travel.*

*And finally, as the planet Mercury is associated with the color green this is another reason why alexandrite is seen as a Mercury stone. However, since alexandrite can be green or red, it has also been connected with the planet Mars, which corresponds to red. This is why some references also associate alexandrite with the zodiac sign of Scorpio, which is ruled by Mars.*



## Colours associated with Planet Mercury

### Green- is associated with Mercury

*Green really does bring the luck in cases of money. But be very clear in your intent regarding money sought with this colour. If done with haste and no specific intent it seems to fade quickly or trickle in a little at a time, just enough to wet your appetite (refer to gold or brown). Green stimulates growth, plant life or garden fairies.*

*Green is an Earth colour and is used on Friday. Depending upon the magickal system you employ, it may be used on Wednesday as it is a healing day as well.*

*Green used on Friday gives an emotional healing (matters of the heart), while Wednesday emphasizes healing knowledge.*

*Apart from astrology, green is the color of revival, hope, prosperity, rest, peace, calm, and fertility where as red is the color of blood, energy, activity, self-expression, power, aggression, and passion.*

*This combination means that alexandrite is a symbol of love and jealousy at the same time. In its daytime appearance, it corresponds to luck and good fortune and at night, its appearance it is more closely associated with love.*



Orange- Orange is a combination of yellow/Mercury (mental agility) and red/Mars (action-energy). Thus you have the best of both worlds, the energies of the actions of red, yet the intelligence to know how to use this action. The over aggressive nature of the colour red/Mars is now toned and tapered with the healing wisdom rays of yellow/Mercury that nurtures the entire system. Sunday is the best day for the use of the colour orange. It can be used on Tuesday or Wednesday with success, depending on your magickal goals. If used on Tuesday, the emphasis is on physical action. If used on Wednesday, it is on mental actions whereas Sunday is a balance of both.

Associations:

*Planet: Sun, Mars, Mercury*

*Day: Sunday, Tuesday, Wednesday*

*Colors: Orange, rarely red, sometimes yellow*

*Used for : Prosperity, energy building, attracts others in a positive way, attracts success, good luck and fortune. Builds energy, vitality and stamina.*

*Encourages fun and discourages laziness. Enhances mental agility, accompanied by the ability to take physical action toward a desired goal.*

*Energizes the entire system. Promotes a happy-go-lucky appearance.*



Yellow-

*Yellow is the colour of mental clarity, swiftness and accuracy. A sunny, positive disposition with spiritual attuning to the healing forces of the male energy*

Associations:

*Planet: Mercury*

*Day: Wednesday*

*Energy: Male*

*Colors: Yellow*

*Used for: To obtain knowledge, learn swiftly, gain insight into problems.*

*Yellow represents all institutions of learning, particularly upper level studies such as sciences. Alters dark mental mood swings, enhances knowledge of*

*healing, ability to concentrate, retention of memory. Yellow attracts people, as it has a warm compelling energy.*



## Healing Properties

*~The energies of mercury can be used for healing, especially in the following areas*

*Aiding digestion, act as demulcents for the respiratory system or have a stimulating or balancing effect on the nervous system and the mind.*

## Gemstones



*Alexandrite is associated with the planet **Mercury** -- the trickster. Alexandrite's ability to change color and its obviously dual nature is further associated with the zodiac sign of Gemini, which is a sign ruled by Mercury.*

*Some believe that an alexandrite in hand can help clarify doubts about love and marriage.*

*The caduceus symbol used for doctors and medicine is also a Mercury symbol and Mercury is associated with healing and was originally the god of medicine. Therefore, alexandrite is a healing stone. As the planet Mercury corresponds to the mind and the nervous system, alexandrite is specifically associated with balancing the mind and helping to achieve calm and is recommended as an anti stress and choleric amulet. Alexandrite is said to be useful for overcoming a lack of confidence, low self-esteem, and a lack of direction or focus in life. Meditating with the stone is supposed to help identify goals and plan how to begin working towards them. Alexandrite is also purported to relieve spleen and pancreatic problems and to help treat swollen lymph nodes.*



## Gods and Goddesses associated with Mercury

*After the Sun and the Moon (of which there are many myths and beliefs), Mercury, the planet of communication is named after the Roman Mercury, messenger of the Gods (Hermes in Greek mythology). He was the son of Jupiter and Maia. He moved between mortals and gods, bringing warnings and information.*

*In ancient Mesopotamia, Mercury was the God Nabu, recording information. He was also known as a rainmaker, promoting good harvests and as such came to be associated with trade, as in the words merchant and commerce. He was also the god of travellers and was honoured by a pile of stones at the side of the road, at which each traveller made an addition, still followed by walkers today.*

*In the 4th Century BC saw the naming of Mercury as Hermes Trismegistos, an aspect of the god's symbolism in later magic and alchemy. In time this name was established and was credited with passing on to humankind medicine, magic, astrology and alchemy*

*Hermes served as messenger for Zeus (though sometimes he job-shares with Iris, the goddess of the dawn) and as sometime conductor of souls of the dead to Hades. He was also known as "the guide and giver of good." As one of Jupiter's favorites (as Mercury) he was considered the most entertaining, the most shrewd and the most resourceful god. When Jupiter tired of Olympus, he chose Mercury to accompany him on forays to Earth, both disguised as mortals.*

*The Germans also had a god associated with Mercury. His name was Woden, from which we get the name for Wednesday which was once "Woden's day"*

*The Norse God Hermod (Mercury) goes to the underworld and comes out with a message. The moon has an aspect of being the God of wisdom, hence a god instructing or giving advice on how to kill the other god. The Greek Hermes is likewise a messenger who goes to the underworld.).*

*Planet: Mercury  
Associated Deities:  
Horus, Isis, Osiris*



## Related Chakras-

### Brow Chakra

- \*color is indigo, violet and sometimes yellow*
- \*it is all the elements*
- \*the main element is spiritual*
- \*the musical note is A*
- \*the mantra is "aum, om or mmm"*
- \*it governs the pituitary gland, skeletal system, pineal gland, nervous system, and other glands.*
- \*it is located one finger width above the bridge of the nose at the center of the forehead.*
- \*sacrament of marriage*
- \*associated with the planet Jupiter in ancient times and the planet Mercury in modern times*
- \*it spins to the right*

*As Mercury is associated with air, alexandrite is an air stone and so connected to the throat chakra.*

*But, because of its duality in color, it has also been associated with the heart, the solar plexus, and the crown chakra.*



# *Astrological associations*

*Gemini the Twins*



*May 21 June 20*  
*I think!*

*Duality: Masculine*

*Triplicity: Air*

*Modality: Mutable*

*Ruling Planet: Mercury*

*Color: Orange*

*Associated Gemstones: Tourmaline*

*Metal: Mercury*

*Tarot Card: The Lovers*

*Key Words: Mentality, Versatility, Nonconformist.*

*Positive Qualities*

*Inquisitive, charming, youthful, open-minded, stimulating, inventive, quick,  
generous.*

*Negative Qualities*

*Restless, easily bored, impractical, fickle, impatient, manipulative, gossip,  
dual personality.*

*Virgo the Virgin*



*August 23 September 22*  
*Tanalise*

*Duality: Feminine*

*Triplicity: Earth*

*Modality: Mutable*

*Ruling Planet: Mercury*

*Color: Dark Blue*

*Associated Gemstone: Sapphire*

*Metal: Mercury*

*Tarot Card: The Hermit*

*Key Words: Discrimination, Methodical,*

*Positive Qualities*

*Sympathetic, humane, organized, witty, charming, warm, dedicated.*

*Negative Qualities*

*Critical, cranky, can be a hypochondriac, nervous, over-demanding.*

## Tarot associations

*The Magician card is associated with the planet, Mercury and deals with the confidence that one holds for themselves. It refers to the admiration of your peers, involving your ego, as well as your intentions in life. This card also refers to your ability to charm or entertain those around you. Sometimes this may even come in the form of a distraction.*

*planet: Mercury*

*positive associations with this tarot card: action, power, originality, confidence, individuality, willpower, new beginnings, potential*

*negative associations with this tarot card: trickery, deception, lack of self-confidence, indecision, abuse of power*

*The Magician is an excellent omen symbolizing new opportunities, the importance of new enterprise and that you will have the willpower and initiative to succeed in whatever you do*

*the mercurial nature of The Magician means that you will be able to think on your feet and bluff your way through any difficulties*

*negatively this card represents trickery or deception and is a warning to be careful of whom you place your trust in*

*another negative aspect of The Magician is that it may suggest that you are lacking in self-confidence and being indecisive*



# Kaballah associations

## Hod:

*The eighth emanation on the Tree of Life.*

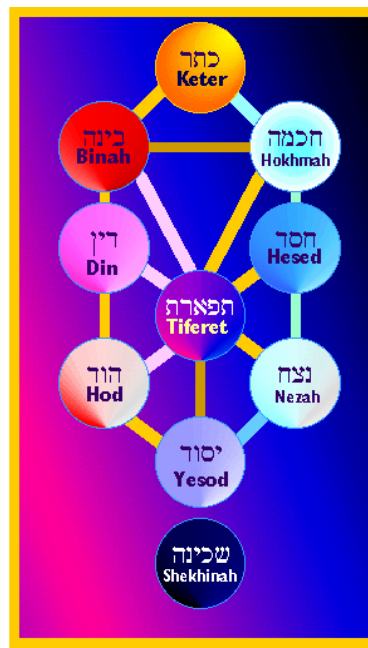
*Hod is associated with the planet **Mercury** and represents intellect and rational thought.*

*It also represents the structuring and measuring capacities of the mind as opposed to the emotion and intuitional aspects of Netzach. Hod has no exact parallel in the*

*Tarot, but is closely linked to the card Judgement, ascribed to the path between Hod and Malkuth.*

*Hod is the eight sphere. Its title, Glory, may seem puzzling since it is the part of the human consciousness which is creative and inventive, depicting the energy matrix of the physical universe. In short Hod is science in all of its manifestations.*

*The eighth emanation on the Tree of Life. Hod is associated with the planet **Mercury** and represents intellect and rational thought. It also represents the structuring and measuring capacities of the mind as opposed to the emotion and intuitional aspects of Netzach*



## Early Applications

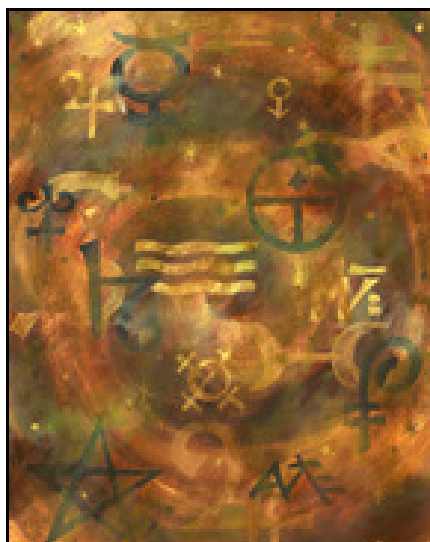
*Mercury* was among the first metals known and its compounds have been used throughout history.

Archaeologists found mercury in an Egyptian tomb dating from 1500 BC.

The Egyptians and the Chinese may have been using cinnabar as a red pigment for centuries before the birth of Christ

In many civilizations, mercury was used to placate or chase away evil spirits.

The alchemists thought that mercury, which they associated with the planet Mercury, had mystical properties and used it in their attempts to transmute base metals into gold.



The Greeks knew of *mercury* and used it as a medicine. Mercury and mercury compounds were used from about the 15<sup>th</sup> century to the mid 20<sup>th</sup> century to cure syphilis.

Because mercury is extremely toxic and its curative effect is unproven, other syphilis medicines are now used.

## Plants *Associated with Mercury*

### Fennel Seed

- *Imparts strength, Vitality, Sexual virility; Protection.*



### Dill



*Planet: Mercury*

*Element: Air*

*Parts Used: Fresh or dried leaves, seeds*

*Powers: Purification, conscious mind, protection, love*

*Smell the sharp odour of dill (especially fresh) for a few seconds to sharpen the mind and clear your head. This is quite beneficial when done before tedious tasks like doing taxes or balancing checkbooks. Add to love and protection sachets. Tie up dried seed heads as protection. Add dried leaves to purification incense mixtures or bath sachets.*

# Lavender

*Lavendula officinalis*)



*Planet: Mercury*

*Element: Air*

*Gender: Masculine*

*Associated Deities: Cernunnos, Circe, Hecate, Medea, Saturn, Serpent Goddesses.*

*Parts Used: Fresh flowers, dried flowers, essential oil*

*Powers: Love, protection, sleep, chastity, longevity, purification, happiness, peace*

*Magickal Lore: Lavender has long been used in love spells and sachets. Clothing rubbed with the fragrant flowers (or placed in drawers or closets with clothes) attracts love. A piece of paper on which you've rubbed lavender is excellent for writing love notes. The scent of lavender particularly attracts men.*

*Magickal Uses:*

*Cleansing, Chastity, Happiness, Longevity, Love, Meditation, Peace, Protection,*

*Purification, Sleep.*



*Because it is ruled by Mercury, the planet associated with the conscious mind, lavender's effectiveness in promoting love seems to lie in its ability to change the way we think about love.*

*In other words, performing love drawing rituals with lavender stimulates the emotional centres and, thereby, reprograms our conscious minds.*

*Smelling lavender with visualization causes us to send signals to others of our need.*

*These flowers are also burned or smoldered to induce sleep and rest, and are scattered about the home to maintain its peacefulness.*

*The plant is so powerful that, if when depressed, one gazes upon the plant all sorrow will depart and a joyous feeling will settle upon the observer.*

*Lavender calms stormy or uncontrolled emotional states by bringing our feelings under conscious control.*

*Too often when we're in such states we kill off all thoughts save for those that prolong our misery.*

*Lavender corrects this imbalance, tempering our emotions with a healthy shot of rationality.*

*The fragrance is also used to generally strengthen the conscious mind.*

*Lavender is also used in healing mixtures, carried to see ghosts, and worn to protect against the evil eye.*

*It is added to purification baths.*

*Despite lavender's love associations, in the Renaissance it was believed that it would preserve a woman's chastity if worn together with rosemary.*



*Agrimony*  
*Agrimonia eupatoria*)



*Gender: Masculine*  
*Planet: Mercury*  
*Element: Air*

*Magickal Uses:*

*To banish Negative Energy, Protection, Sleep, Psychic Healing, To cleanse the Aura.*



# Horehound:

*(Marrubium vulgare)*



*Gender: Masculine*  
*Planet: Mercury*  
*Element: Air*

*Associated Deities:*  
*Horus, Isis, Osiris*

*Magickal Uses:*  
*Cleansing, Exorcism, Healing, Cleansing of the Aura, Mental Powers,*  
*Protection*



# Trees associated with Planet Mercury



## Hazel

*The Hazel nut is the emblem of concentrated wisdom. One could gain knowledge simply eating nuts.  
In this aspect it is associated with the Salmon, a sacred symbol of wisdom.*

*In Irish Lore it is the Hazel was the Bile Ratha where in which the poetic Fairy lives.  
It was a capital crime to felling a Hazel tree.*

*Ogma, who is credited with creating writing, is associated with great "knowing."*

*It is he who is credited with mandating that the Oral tradition of the Celts be closely guarded and preserved, yet through his creativity he created the alphabet based on tones and sounds.*

*The ogham letter, coll, is associated with the hazel tree.*



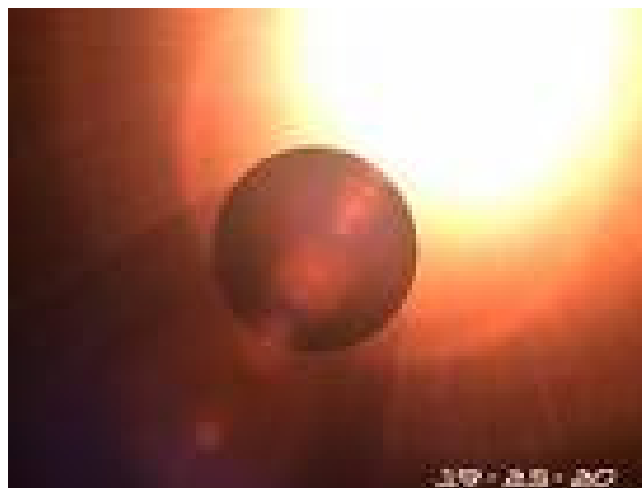
# Rudraksha Bead

*4 Facet*



*Represents the creator of the world - the Lord Brahma.*

*It improves memory, creative and logical powers, speaking ability, and generally sharpens the brain. It gives clarity of thought and is associated with the planet **Mercury**.*



# The Symbols



Mercury



*The astrological signs of Gemini and Virgo are associated with the Planet Mercury plus the Sacred Phoenix Symbol*

## Attunement Procedure

*Once you have been attuned to The Planet Mercury energies you are able to pass the attributes and energies on to others.*

*The attunement procedure is simple*

*There are 4 symbols, the symbol for mercury itself and the associated astrological symbols of Gemini and Virgo, plus the Sacred Phoenix Symbol which seals in the energies of all the others*

*The attunement is done by Intent.*

## *Suggested Method*

*This is by no means the only method but it is the one I use.*

*Preparation:*

*Light a candle, play soft music, light incense, dim the lights etc according to your own preferences*

*Relax.*

*Call in your Guides, God, Goddess, Great Spirit or whoever you relate to.*

*Ask for their protection and help with the attunement*

*State your intention i.e.*

*to be a clear, pure channel to send the energies of the Planet Mercury to . for the best that s possible for their Greater Good, and for them to receive it perfectly and use it for the greater good of all..*

*You may want to use the Usui Distant symbol if you are doing a distant attunement*

*To access the energy of the planet do the following guided meditation.*

*Picture yourself in some quiet ,safe place.*

*It is night and the sky is filled with millions of blue-white glittering stars. Just gaze at them in your minds eye . Feel your eyes getting very heavy and feel a soft, gentle breeze wafting around you like a delicate silk scarf.*

*Now, picture the Planet Mercury, Red and fiery As you watch it turning on its axis you become aware of three symbols leaving the orbit of your planet and gently floating to earth towards you..*

*One is quicker than the others you can feel the energies from it and as it gets closer they become stronger and*

*stronger.*

*Feel those powerful energies, feel it melt into your body.*

*Feel*

*the power and the wisdom and the knowledge.*

*Allow it to be.*

*Let go of all external influences and relax into the moment.*

*What do you see, what do you feel?*

*Everyone will experience something different as it brings to you only what you need.*

*After a few moments you are aware that the other symbols are now right in front of you.*

*Draw them into your energy field too and feel the love and warmth as the 3 symbols merge they are like triple flames: they belong to one another and now they belong to you.*

*You may call on these symbols at any time that you need to re-charge or re-connect with the special energies of Merury.*

*Spend as much time as you need absorbing the ancient knowledge then, when you are ready slowly come back to this planet Earth, take a couple of deep breaths and thank your guides and higher self etc. for taking you on this journey.*



*This manual may be given freely to students but is not to be sold or altered in any way without the express permission in writing from the founders.*

*Midnightowl and Silverwolf*

*December, 2006*

*Australia*

*[midnightowl22433@yahoo.com.au](mailto:midnightowl22433@yahoo.com.au) [silverwolf2503@yahoo.com.au](mailto:silverwolf2503@yahoo.com.au)*





